

SHELTERS & CRISIS

Stepping Stones Shelters: (715) 235-2920

Provides emergency shelter as space is available and services for housing related issues.

Stepping Stones Winter Haven 7:30 p.m.—7:30 a.m.

Provides overnight, safe shelter at Stepping Stones Shelter, 1518 Stout Road (white house next to Stepping Stones) for adults age 18 and over. Open from November 15 to March 31.

Rural Housing (888) 400-5974

Provides rent and utility assistance to qualifying households.

The Bridge to Hope: (715) 235-9074/(800) 924-9918
Texting Hotline (715) 505-3640

Offers crisis intervention, emergency shelter & services to victims of domestic and sexual abuse and human trafficking in Dunn and Pepin Co.

Northwest Connections: 24 hour mental health and AODA Crisis Line. 1-888-552-6642

TeenCARE Positive Alternatives: (715) 235-9552

Offers crisis/intervention services for teens/parents.

Sojourner House/Catholic Charities:

(715) 832-6644/(877) 832-3483

A shelter for men and women over 18.

618 South Barstow St., Eau Claire.

American Red Cross: (715) 235-3700/(877) 618-6628

Disaster Services provides for immediate needs of food, shelter & clothing as a result of a disaster.

Armed Forces Emergency Services provides emergency communication for military members and their families.

HOME REPAIRS

Stepping Stones - (715) 235-2920

Provides basic home repairs, small modifications and ramps for low-income home owners as volunteers are available. No plumbing.

Dunn County Community Development Block Grant

(715) 781-4658

Home Rehabilitation Loans at 0% interest with deferred payments. Waiting list, based on priority.

NON-CRISIS INFORMATION

American Red Cross: (715) 235-3700/

(877) 618-6628

Health & Safety Services teaches life saving health and safety skills. Blood Services provides a safe and steady blood supply.

MEDICAL

Free Clinic of the Greater Menomonie Area

“General Info” (715) 308-3808

Provides services to the uninsured with household incomes of 250% or less of the Federal Poverty Level. Open Tuesdays 5pm-7pm. First come, first serve.
www.menomoniefreeclinic.org

Mayo Clinic Health System—Red Cedar

Hospital: (715)235-5531 **Clinic:** (715) 233-7777

Urgent Care, Emergency, Family Birth Center, Behavioral Health

Marshfield Clinic—Menomonie

(715) 233-6400

Family medicine primary care clinic

Prescription Drug Discount Cards

Discounts on out-of-pocket expenses through Family Wize: www.familywize.org (715) 235-

3800

—Discounts on out-of-pocket expenses is a program sponsored by the local government association.

www.caremark.com/naco or pick up a card at the Dunn County Administration Office, 3001 US Hwy 12 E.

UTILITY & FINANCIAL ASSISTANCE

Catholic Charities-St. Lawrence Community

Services: (715) 832-6644/(877) 832-3483

Provides housing, utility assistance, foreclosure prevention, home buyer education and case management to income eligible. 488 N Dewey St., Eau Claire, WI 54703

Citizens Energy Oil Heat Assistance(877) 563-4645

Veteran’s Office: (715) 232-1646

Veteran’s federal & state benefits, VA Health Care.

Dunn County Housing Authority: (715) 235-4511

Ext. 204

Provides rent subsidy assistance for low income families, the elderly, and disabled adults. Waiting List.

Menomonie Housing Authority: (715) 235-0656

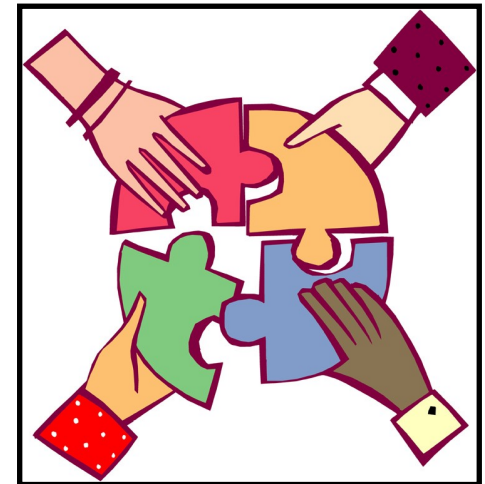
Provides housing for low income families and the elderly based on 30% of gross income.

WestCAP: (715) 265-4271/(800) 606-9227

Provides housing and supportive services for individuals and families experiencing homelessness, food assistance to low-income families and seniors, adult education, weatherization, and energy assistance. Please see westcap.org for more information.

MAKING THE RIGHT CONNECTION

DUNN COUNTY RESOURCE GUIDE



Provided by the Dunn County Emergency
Food and Shelter Collaborative
Revision July, 2021

dunncounty.wix.com/resourceguide

For updates contact Extension Dunn County, 715-232-1636. University of Wisconsin, U. S. Department of Agriculture and Wisconsin counties cooperating. An EEO/AA employer, Extension provides equal opportunities in employment and programming, including Title VI, Title IX, and the Americans with Disabilities Act (ADA) requirements.

ASSISTANCE

2-1-1: Free, confidential community human services information and referrals. Simply dial 2-1-1 to get help with life.

House Calls: (715) 232-6475 / (888) 232-6475

Provides personal care, financial mgmt., supportive homecare, community support service, guardianship, supervised visits. www.housecallsinc.org

Dunn County Human Services: (715) 232-1116

Mental Health Clinic, Aging & Disability Resource Center, Family & Children's Unit, & Birth to 3 Program

Economic Support: (Dunn Co. Human Services)

To apply, make appointments or ask questions on BadgerCare, Medicaid, Food Share, & Childcare Assistance programs, call (888) 283-0012

WestCap Energy Assistance: (715) 265-4271

access.wi.gov Wisconsin's internet tool to apply for and check eligibility for low cost or no cost health, nutrition or other programs.

Job Center: (715) 232-7360

401 Technology Drive East, Menomonie
Job search, employment and training assistance for youth, adults and dislocated workers. W2 program, FSET & Emergency Assistance (once/year for families that qualify) www.workforceresource.org

Community Connections/Stepping Stones:

(715) 235-2920

Provides help with things such as seasonal yardwork, small fix-it repairs, shopping, transportation and companionship as volunteers are available.

Dunn County Health Department: (715) 232-2388

Immunizations, fluoride for children, health screenings, women's cancer prevention program, family planning, environmental health services, lead testing, well permits & water tests. www.co.dunn.wi.us

United Way C3 Center: (715) 231-3066

1620 Stout Road, Tues. 3-6pm & Thurs. 11am- 2pm
Free used furniture, appliances, clothing, and household goods with referral.

DENTAL

Menomonie Dental Center: (715) 233-6800

404 Red Cedar St, Menomonie. Dental care. Accepts MA/BC/MC/Ins.

Marshfield Clinic Dental: (715) 738-2000

(Chippewa Falls) Dental care. Accepts MA/BC/MC/Ins/non-Ins.

FOOD & NUTRITION

Dunn Co. DHS-Aging & Disability Resource Center:

(715) 232-4006

Home delivered meals, senior meal sites, liquid nutritional supplements.

Senior Commodities Food Box: (715) 235-2920

Free monthly government commodities food box for income-eligible people, age 60 and above, distributed at Stepping Stones. Also available through WestCAP in Boyceville: (715) 977-1191

WIC Program: (715) 232-2498 / (888) 332-5768

Supplemental food program for women, infants, and children. Offers health screening, nutrition education, and breastfeeding support. Provides vouchers for specific foods.

Stepping Stones Food Pantry: (715) 235-2920

1602 Stout Road, Menomonie. Mon., Thurs. & Fri: 11am-2pm, Tues & Wed: 3pm-6pm Sat: 10am—Noon Provides food and personal care items to low-income residents of Dunn County.

Stepping Stones Free Produce Fridays

Every Friday (except holidays) - 2:15pm-4pm

Free produce distribution, open to anyone in need of fruit & veggies. Patrons are asked to bring their own bags or boxes. For more info, email foodpantry@steppingstonesdc.org

Stepping Stones & Feed My People Mobile Pantries:

Patrons are asked to bring their own bags or boxes. For more info, email foodpantry@steppingstonesdc.org

-First & Third Thursday of each month (except holidays). 11:30-12:30 at the Sand Creek Arts Building, E3911 Cty Rd I

2:00-3:00 at the Ridgeland Community Center, 200 Diamond St

-Second & Fourth Thurs. of each month (except holidays) 11:30-12:30 in Downsview, New Hope Lutheran Church.

N2698 460th St

2:30-3:30 in Colfax at Viking Bowl, N8590 State Rd 40

WestCAP Food Access/Resource Center:

(715) 977-1191

823 Main Street, Boyceville. Thurs. 3pm-7pm and Fri. 9am-1pm. Open to residents of Boyceville and Glenwood City School Districts who are at or below 185% of the Federal Poverty Level. Choose Stepping Stones or WestCAP Pantry.

Caring Ministries Food Pantry: (715) 704-9571

Emergency food for residents in Colfax postal code or school district. By appt. only.

Elk Mound: Shepherd of the Hill Church Food Pantry

Provides food to those in need. (715) 879-5115
Tues. 4pm-6pm & Fri. 10am-Noon or by emergency appt.

Food Share: GetaQuestCard.org (877) 366-3635

Ruby's Pantry hosted by Shepherd of the Hill:

Registration 7:30—9:00 am. Food Distribution begins at 8:30 am. 2nd Saturday of the month. \$20 donation. Bring your own bags/boxes. www.rubyspantry.org

W2 Program: (855)792-5439

Must have minor children in the home. (888)283-0012

Project SAM (Share a Meal) (715) 235-2920

Weekend meal bags for children distributed by Stepping Stones through local schools—Head Start through high school.

Knapp Community Project Pantry (715)665-2310

508 Hwy 12W, Knapp. Emergency food for Knapp residents. Thurs 2-4pm & Fifth Sat. of the month 7-10am

Menomonie Farmers' Market: Wilson Park, Wilson Avenue by the bandshell: Local Produce

May - October: Wed. 10:00am-6pm & Sat. 8am-1pm.

Tuesday's Table - Every Tues. 5pm-6pm;

St Joseph's Church; 10th St & Wilson Avenue

Wednesday's Table - Every Wed. 5pm-6pm; Christ Lutheran Church; 1306 Wilcox St, Menomonie. For information or to volunteer, <https://www.facebook.com/clcwednesdaystable/>

<https://www.facebook.com/clcwednesdaystable/>

Thursday's Table - Every Thurs. 5pm-6pm

1st Congregational Church, 420 Wilson Avenue, Menomonie. You are invited to a free home cooked meal.

Food Harvest Ministry Food Distribution:

Distribution starts at 10am. Suggested donation \$20 Bring your own bags/boxes. No questions asked. 100% non-profit. (715) 643-2350

Boyceville—Third Saturday of each month at the Community Center.

Knapp—Fifth Saturday of the month in Knapp.

EDUCATION

Extension: (715) 232-1636

Provides Education in Nutrition, community, parenting, budgeting, Agriculture & 4-H Youth Development.

Early Head Start/Head Start/All Day 4K:

(715) 235-9122 / (800) 352-6283

Early Head Start serves income eligible families from pregnancy to age 3. Head Start serves families with kids ages 3-5 including 4K, pregnant and parenting teens, and home visit program.

Chippewa Valley Tech College—Adult Basic Education, Computer Literacy, ESL, GED (715) 233-5344